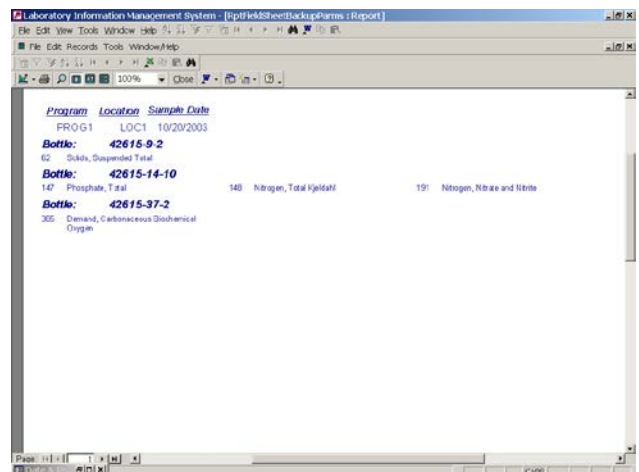
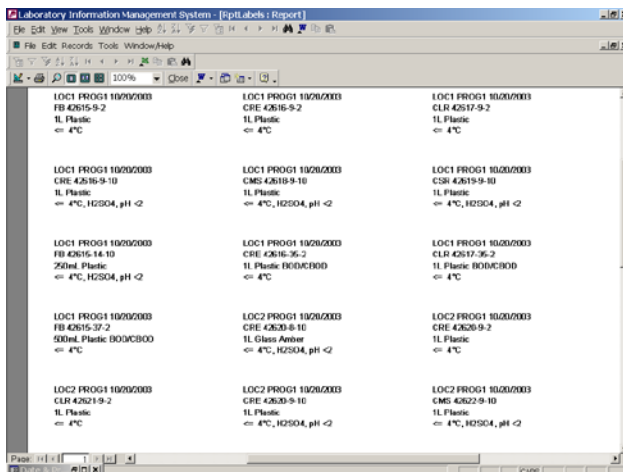
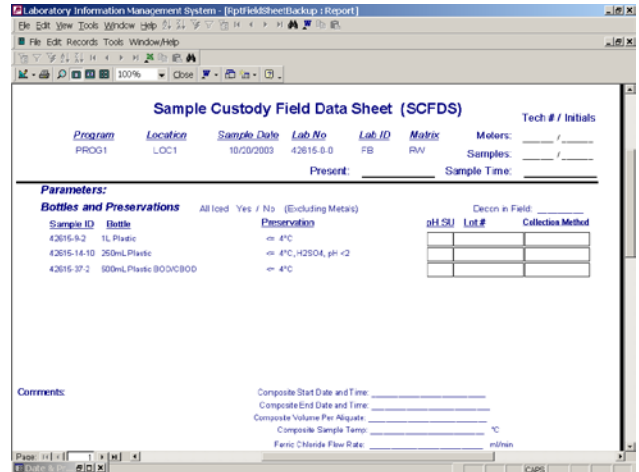
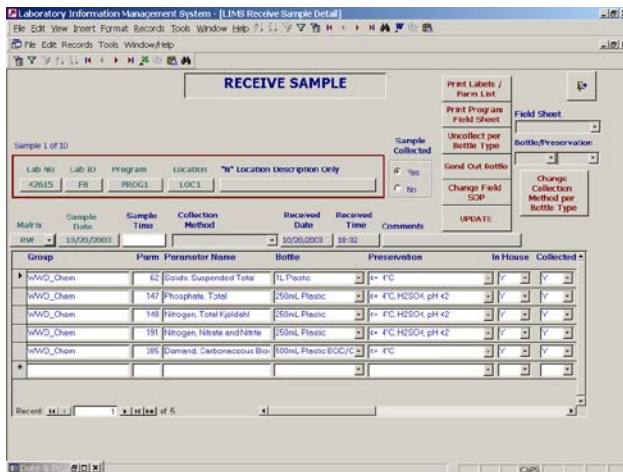
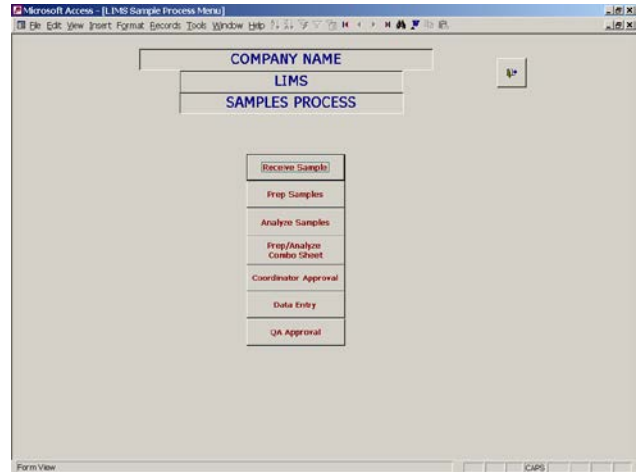
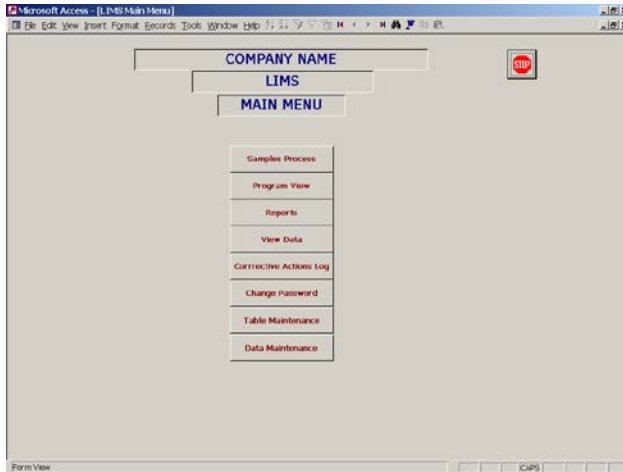
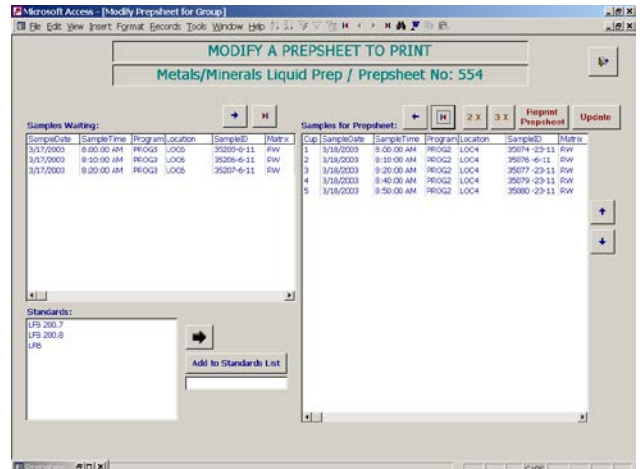
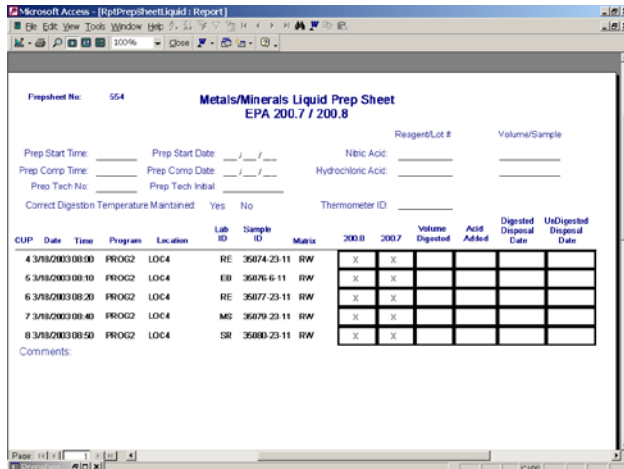
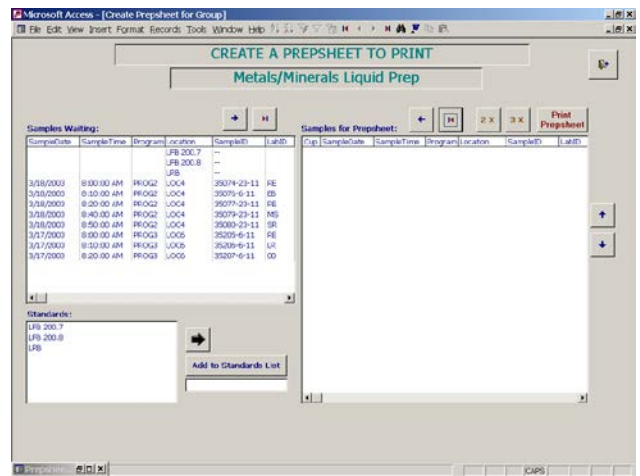
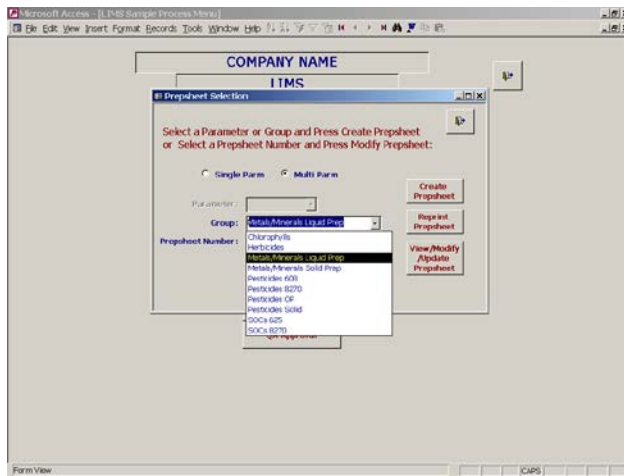
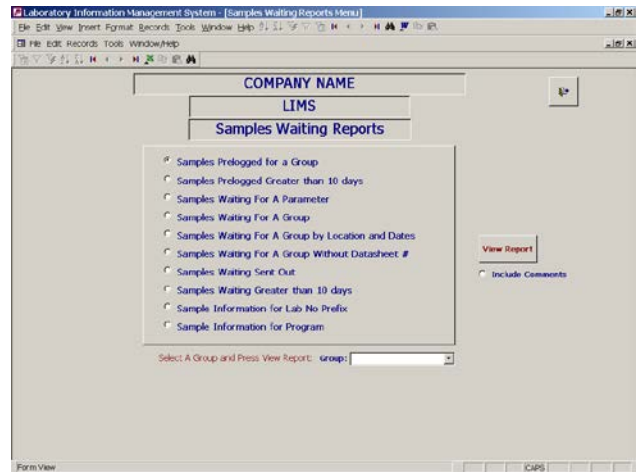
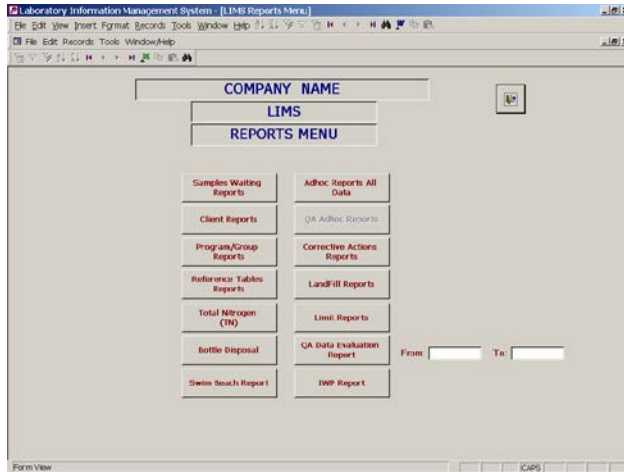


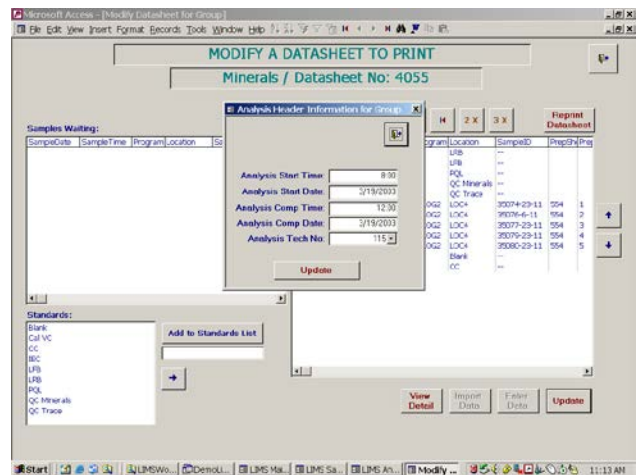
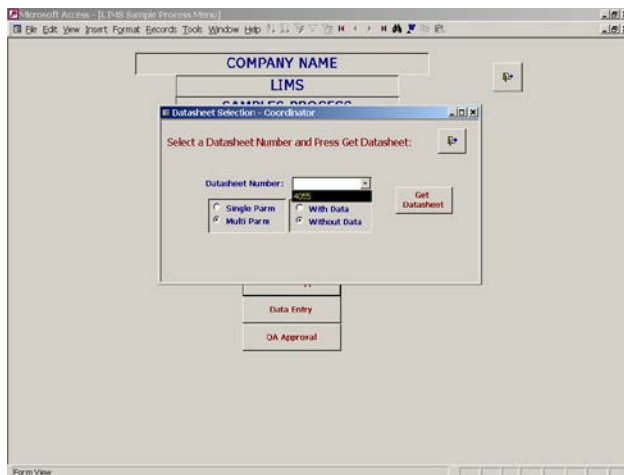
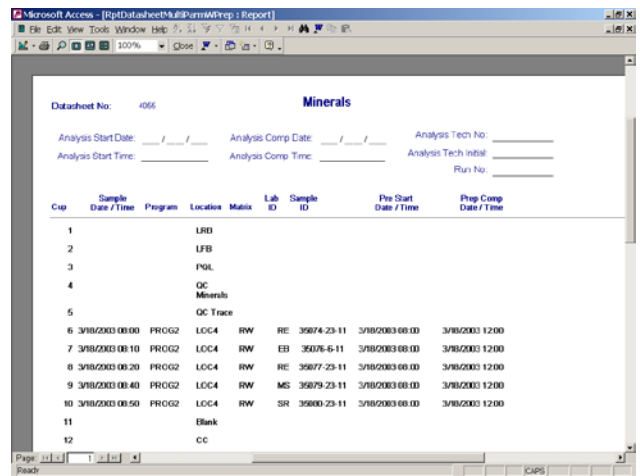
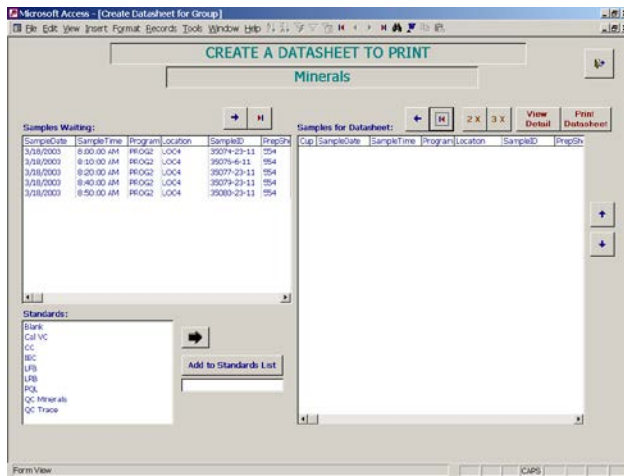
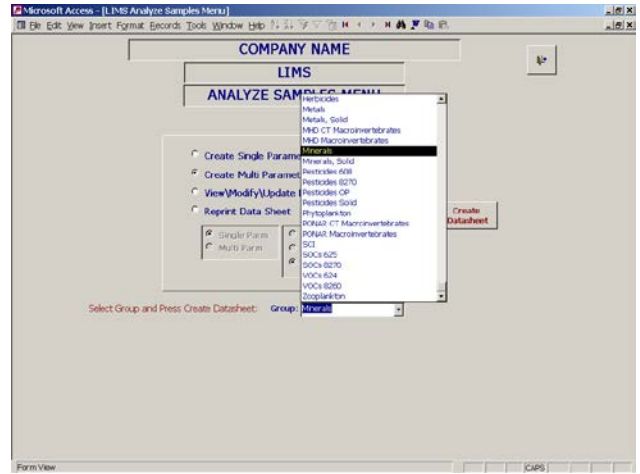
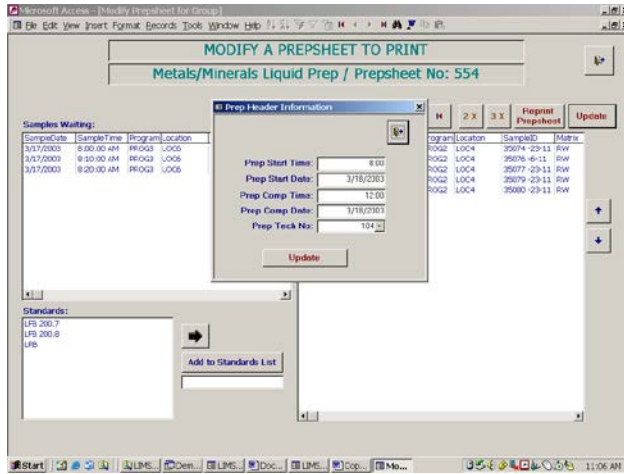
Laboratory Information Management System for an Environmental Lab



Laboratory Information Management System for an Environmental Lab



Laboratory Information Management System for an Environmental Lab



Laboratory Information Management System for an Environmental Lab

Microsoft Access - [Coordinator Datasheet View for Group]

COORDINATOR DATASHEET VIEW

Minerals / Datasheet No: 4055 /

Samples for Datasheet:

Slp	Sample Date	Sample Time	Program	Location	Sample ID	Prep Order	Prep Date
1				LFB			
2				LFB			
3				PL			
4				QC Minerals			
5				QC Trace			
6	3/18/2003	8:00:00 AM	PROG2	LOC4	35074-23-11	3564	1
7	3/18/2003	8:10:00 AM	PROG2	LOC4	35076-6-11	3564	2
8	3/18/2003	8:20:00 AM	PROG2	LOC4	35077-23-11	3564	3
9	3/18/2003	8:40:00 AM	PROG2	LOC4	35079-23-11	3564	4
10	3/18/2003	8:50:00 AM	PROG2	LOC4	35080-23-11	3564	5
11				Blank			
12				CC			

View Detail

Send Back to Analyt.

Initial Approval Resend Approval

Data Import: Yes No

Changes to Values: Yes No

Approve

Microsoft Access - [Data Entry Menu]

DATA ENTRY

Select Data Entry Type and Press Enter Data

Entry by Datasheet Number
 Entry by LabNo Prefix (Field Params Only)
 Entry by Parameter/LabNo Prefix
 Entry by Samples Sent Out
 Entry by Samples Sent Out By Parameter

Enter Data

Single Parameter Multi Parameter
 Datasheet Number: [dropdown]
 Parameter: [text box]

Microsoft Access - [Data Entry Menu]

DATA ENTRY

Select Data Entry Type and Press Enter Data

Entry by Datasheet Number
 Entry by LabNo Prefix (Field Params Only)
 Entry by Parameter/LabNo Prefix
 Entry by Samples Sent Out
 Entry by Samples Sent Out By Parameter

Enter Data

Single Parameter Multi Parameter
 Datasheet Number: [dropdown]
 Parameter: [text box]

Microsoft Access - [Datasheet View]

Datasheet View

Data Sheet Number: 4055

Remove Record

Param #	Sample Date	Sample Time	Program Name	Location	Lab ID	Lab No	Sample ID	Sym 1	Value	Sym 2	Sample Comments
815				LFB							
815				LFB							
815				PL							
815				QC Minerals							
815				QC Trace							
815	3/18/2003	8:00	PROG2	LOC4	PL	35074	35074-23-11				
815	3/18/2003	8:10	PROG2	LOC4	EB	35076	35076-6-11				
815	3/18/2003	8:20	PROG2	LOC4	RE	35077	35077-23-11				
815	3/18/2003	8:40	PROG2	LOC4	MS	35079	35079-23-11				
815	3/18/2003	8:50	PROG2	LOC4	SR	35080	35080-23-11				
815				Blank							
815				CC							

Sample Comments: [text box] Detail Comments: [text box] Update

Record 1 of 12 of 12